

High Current Thermal-link (HCTCO)



Features

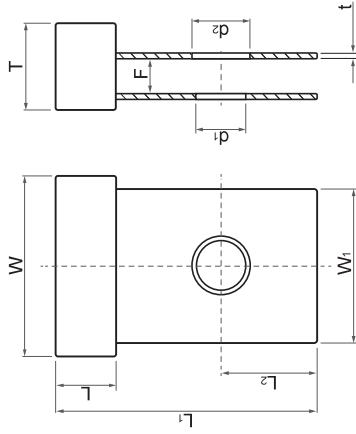
- Rated Current: (63 – 200) A
- Rated Voltage: 100 Vdc
- Rated Functioning Temp.: (76 – 221) °C
- Non-resettable
- Over-temp. Protection

Applications

Battery module , motor

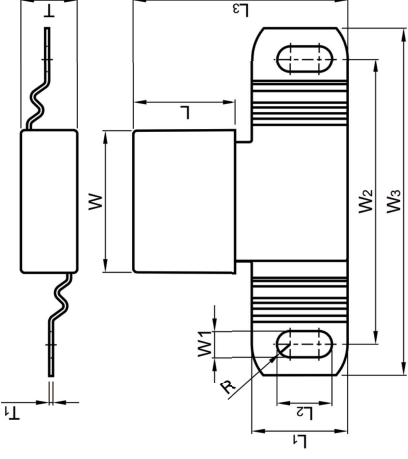
Dimensions (mm)

TV Series



	L	L ₁	L ₂	W	W ₁
TV Series	7.8±0.5	34.0±0.5	12.5±0.2	23.4±0.5	20.0±0.5
	T	t	d ₁	d ₂	F
	11.3±0.2	0.60±0.05	Φ6.5±0.1	Φ7.5±0.1	4.7±0.5

TV Series



TS Series	L	L ₁	L ₂	L ₃	W
	21.5±0.5	20.0±0.5	11.5±0.5	45.5±2.0	30.0±0.5
	W ₁	W ₂	W ₃	T	T ₁
	5.5±0.2	60±2	73±2	11.8±0.5	0.80±0.05
TB Series	L	L ₁	L ₂	L ₃	W
	23.0±0.5	20.0±0.5	11.5±0.5	46.5±2.0	35.0±0.5
	W ₁	W ₂	W ₃	T	T ₁
	5.5±0.2	66.5±2.0	79±2	13.5±0.5	1.50±0.05

Specification

Model	T _r	T _m	I _r	U _r	I _n	I _{max}	RoHS REACH
	(°C)	(°C)	(A)	(V)	(kA)	8/20 μs (1 Time)	
TV Series	102 - 150	180	70	DC 60	—	—	•
TS Series	102 - 150	180	100	DC 100	50	100	•
TB Series	102 - 150	180	200	DC 100	100	200	•

NEW

100 A, 200 Vdc, T_r: (76 - 221) °C

